



BRIAN DONNELLY
Infinity Yacht Sales
1450 Harbor Island Dr. Suite 208
San Diego, CA, US
Office: (619) 550-7279
Mobile: (619) 431-1194
Brian@infinityyachtsales.com



1978 Viking Double Cabin

Boat Type: Aft Cabin

Address: San Diego, CA, US

Price: \$79,900



OVERVIEW

The viking double cabin is built on a great platform. Viking, known for being a quality built vessel, designed this aft-cabin motor yacht to be both comfortable and seaworthy. This particular vessel was upgraded and remodeled to make her a comfortable and elegant live aboard/cruiser. New furniture, Newly upholstered Dinette, Upgraded Stainless Steel Hatches and Port Holes. This vessel also features a large aft cabin with a true center line queen, several hanging lockers, an en-suite head, both heads are Vacuflush, stainless steel davit, Upgraded electronics, Large fully equipped galley with Norcold AC/DC fridge, large pantry, and a VIP berth forward with an en suite head. This vessel is slipped at one of the nicest marinas in San Diego.

SPECIFICATIONS

Basic Information

Manufacturer:	Viking	Vessel Name:	
Model:	Double Cabin	Boat Type:	Aft Cabin
Year:	1978	Hull Material:	Fiberglass
Category:	Power	Hull Type:	
Condition:	Used	Hull Color:	
Location:	San Diego, CA, US	Designer:	
Available for sale in U.S. waters:	Yes	Flag of Registry:	

Dimensions & Weight

Length:	43 ft - 13.11 meter	Draft - max:	3 ft 8 in - 1.12 meter
LOA:	47 ft - 14.33 meter	Bridge Clearance:	-
Beam:	14 ft 8 in - 4.47 meter	Dry Weight:	-

Engine

Make:	Detroit Diesel	Engine Type:	Inboard
Model:	6-71 N	Drive Type:	
Engine(s):	2	Fuel Type:	Diesel
Hours:	1100	Horsepower:	310 (Individual), 620 (combined)
Cruise Speed:	12 MPH	Max Speed:	18 MPH
Range:	-	Joystick Control:	No

Tank Capacities

Fuel Tank:	350 gallons - 1 tank(s)	Holding Tank:	30 gallons - 1 tank(s)
Fresh Water Tank:	100 gallons - 1 tank(s)		

Accommodations

Total Cabins:	3	Crew Cabins:	1
Total Berths:	2	Crew Berths:	1
Total Sleeps:	1	Crew Sleeps:	1
Total Heads:	2	Crew Heads:	1
Captains Cabin:	-		

DESCRIPTIONS

Electronics

- Flybridge Helm

- Raymarine Fishfinder and Radar
- ICOM VHF
- Compass

Galley

- Norcold AC/DC refrigerator
- Princess 3 burner stove with oven
- microwave oven
- 20 gal hot water heater
- granite counter tops

Electrical

- 3000 Watt Inverter
- 50 Amp shorepower
- 50 Amp battery charger
- 12 volt & 110 volt lighting

- Complete stereo system throughout

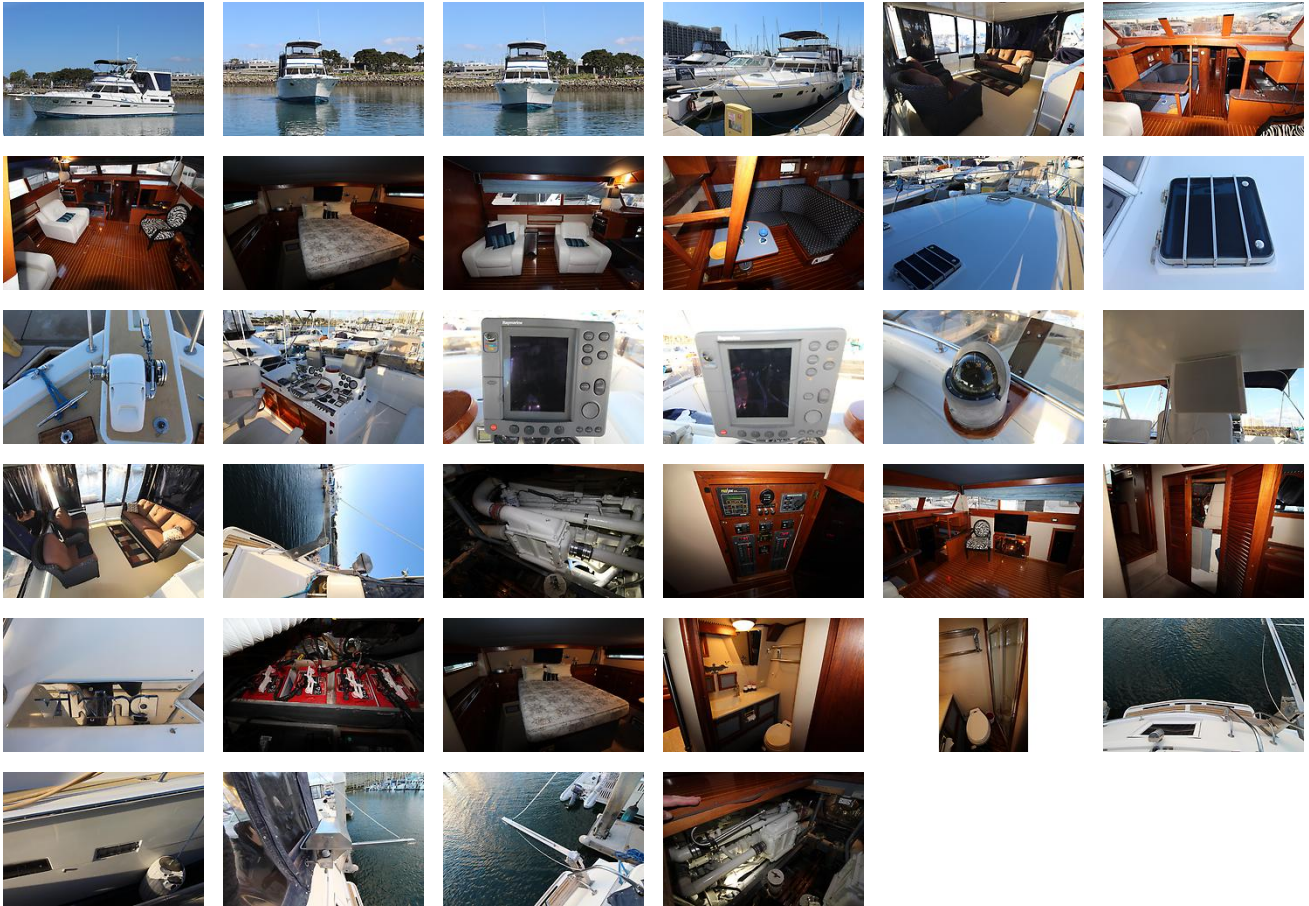
Accommodations

This vessel sleeps four in two staterooms and another 2 dinette. Forward is the guest stateroom with a large V-berth with plenty of storage and a private head with vac u flush toilet and a stall shower. Aft to starboard is a complete electric galley, directly across is a very cozy dinette. Up three stairs is the spacious salon, going aft is the master stateroom with an centerline island queen, lots of storage and two hanging lockers, electric toilet and a stall shower. The aft deck is fully enclosed with eisenglass and canvas. This vessel is a great liveaboard or cruiser.

Disclaimer

The Company offers the details of this vessel in good faith but cannot guarantee or warrant the accuracy of this information nor warrant the condition of the vessel. A buyer should instruct his agents, or his surveyors, to investigate such details as the buyer desires validated. This vessel is offered subject to prior sale, price change, or withdrawal without notice.

GALLERY



LOCATION MAP



BRIAN DONNELLY
Infinity Yacht Sales
1450 Harbor Island Dr. Suite 208
San Diego, CA, US
Office: (619) 550-7279
Mobile: (619) 431-1194
Brian@infinityyachtsales.com

