



BRIAN DONNELLY
Infinity Yacht Sales
2811 Dickens St B133
San Diego, CA, US
Office: (619) 550-7279
Mobile: (619) 431-1194
Brian@infinityyachtsales.com



2009 Ranger Tugs 21EC

Boat Type: Tug

Address: San Diego, CA, US

Price: \$39,900



OVERVIEW

This Vessel is currently located at Catalina Island

Since its introduction, the Ranger R-21EC has earned a loyal following among enthusiasts who enjoy cruising at its classic best. Owners of this popular vessel have always measured fuel use in pints per hour, not gallons. The R-21EC interior is spacious enough to accommodate pilot and companion seats, head, galley cabinet and now a larger berth.

Inspired by a traditional Bristol Bay trawler design, the Ranger R-21EC will never go out of style, ensuring both lasting appeal and maximum resale value. Easily trailerable, this boat rewards its owner with a level of versatility that few other cruisers can match.

SPECIFICATIONS

Basic Information

Manufacturer:	Ranger Tugs	Vessel Name:	
Model:	21EC	Boat Type:	Tug
Year:	2009	Hull Material:	Fiberglass
Category:	Power	Hull Type:	
Condition:	Used	Hull Color:	
Location:	San Diego, CA, US	Designer:	
Available for sale in U.S. waters:	Yes	Flag of Registry:	

Dimensions & Weight

Length:	21 ft - 6.4 meter	Draft - max:	2 ft - 0.61 meter
LOA:	24 ft - 7.32 meter	Bridge Clearance:	-
Beam:	6 ft 8 in - 2.03 meter	Dry Weight:	3150 ft - 960.12 meter

Engine

Make:	Yanmar	Engine Type:	Inboard
Model:	30 Horsepower	Drive Type:	
Engine(s):	1	Fuel Type:	Diesel
Hours:	210	Horsepower:	30 (Individual), 30 (combined)
Cruise Speed:	7 MPH	Max Speed:	9 MPH
Range:	-	Joystick Control:	No

Tank Capacities

Fuel Tank:	18 gallons - 1 tank(s)	Holding Tank:	10 gallons - 1 tank(s)
Fresh Water Tank:	10 gallons - 1 tank(s)		

Accommodations

Total Cabins:	-	Crew Cabins:	1
Total Berths:	1	Crew Berths:	1
Total Sleeps:	1	Crew Sleeps:	1
Total Heads:	1	Crew Heads:	1
Captains Cabin:	-		

DESCRIPTIONS

Additional Information

Lewmar Windlass

Helm seat, folding

Interior cabin lighting, 12V

Aft storage locker w/removable cushion

Anchor roller w/pin Fender storage, aft,

Built-in Folding S.S. mast for trailering

Single lever shift and throttle control

Curtains and window covers for privacy

Forward deck hatch, opening, translucent Hatches (2), pilothouse roof, opening with screens

Sink, fresh water system w/demand pump, 12V

Windshield wipers (3), pantographic

Portlights (4) brass, opening with hooks

Co Monitor, 12V

Courtesy lights,

Cockpit entry step

Dual trumpet electric

Hrn Fire extinguisher port in motor box

Illuminated compass

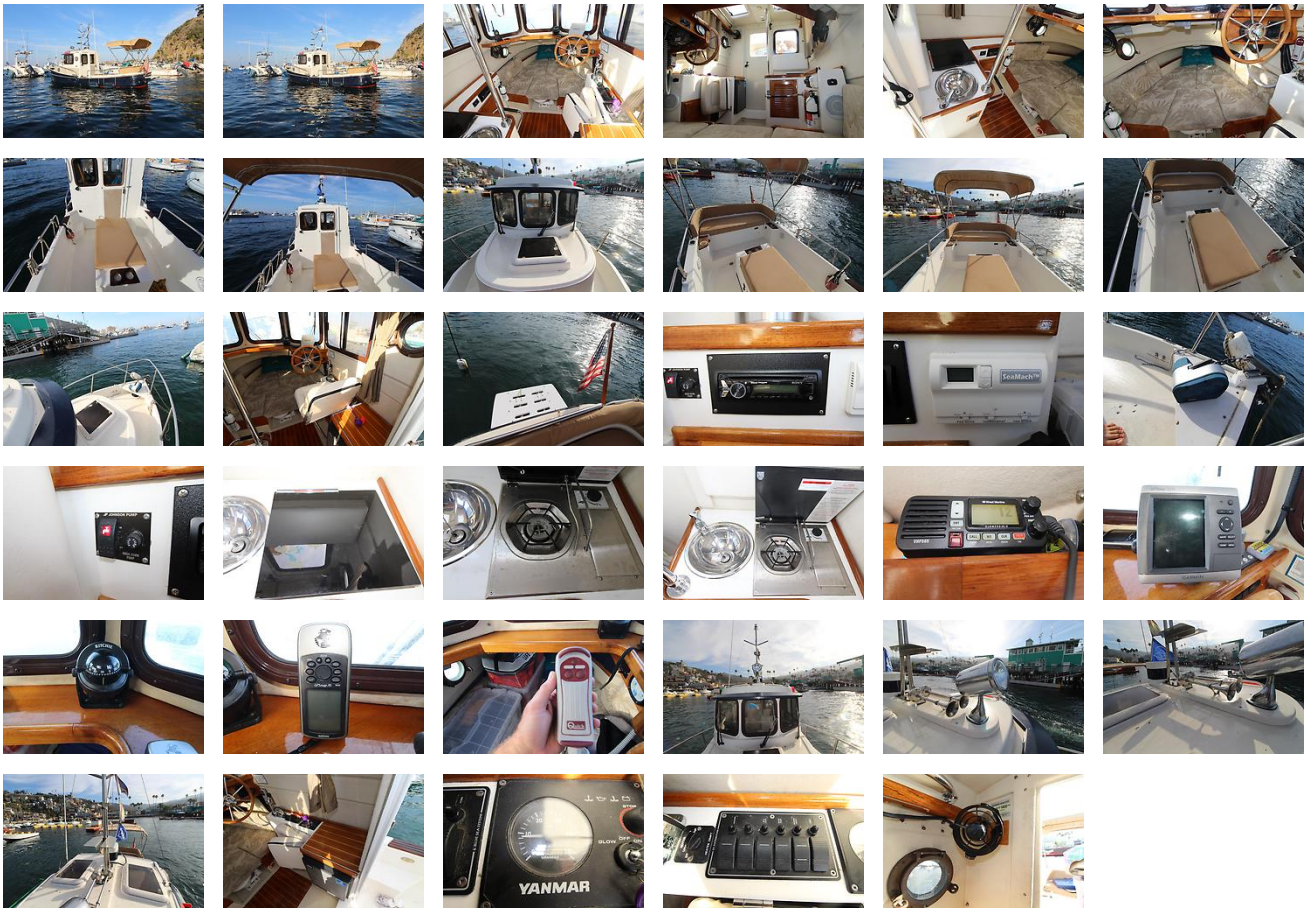
Navigation lights, w/lightboards

Jabsco Spotlight

Disclaimer

The Company offers the details of this vessel in good faith but cannot guarantee or warrant the accuracy of this information nor warrant the condition of the vessel. A buyer should instruct his agents, or his surveyors, to investigate such details as the buyer desires validated. This vessel is offered subject to prior sale, price change, or withdrawal without notice.

GALLERY



LOCATION MAP



BRIAN DONNELLY
 Infinity Yacht Sales
 2811 Dickens St B133
 San Diego, CA, US
 Office: (619) 550-7279
 Mobile: (619) 431-1194
 Brian@infinityyachtsales.com

